

M — JANUARY 2019



**CORRECTIONAL,
JUVENILE JUSTICE
& IMMIGRATION
CATALOGUE**



235 BARKLY STREET
FOOTSCRAY VIC 3011
AUSTRALIA

WWW.HARRYSSHOESPLUS.COM.AU
OPERATIONS@HARRYSSHOESPLUS.COM.AU
ORDERS@HARRYSSHOESPLUS.COM.AU

TEL: 03 9687 2545
FAX: 03 9687 2541

ABOUT US

Harry's Shoes Plus has become the leading supplier to the Correctional Services Industry including both Adult and Juvenile Justice as well as the Immigration Centres.

Our team has developed ranges to cover the detainees' requirements in footwear, clothing, work-wear, personal care, recreational activities, religious and kitchen items.

We are actively expanding our listings and services, and our supply list is well in excess of 150 items, and growing all the time.

We have become the largest "one stop" supply house for many of our valued clients.

FREIGHT POLICY

Harry's Shoe Plus delivers all over Australia and as our business grows and expands more and more locations are joining our family of customers.

Our preference is to deliver FIS but sometimes this is just not possible. Primarily this is due to two things: [i] size of order and [ii] distance of journey.

If either of these two apply we will notify you of the possible freight charge.

Can't see the item you want in our catalogue?

Just call us, we will do our best to locate it at the **best quality & most affordable price** for you.

Our sensational prices are accessible via the **Website** or the **Master Price List** accompanying this catalogue.

WWW.HARRYSSHOESPLUS.COM.AU

CONTENTS

FOOTWEAR

Adults' Runners	Page 4 — 5
Thongs & Gum Boots	Page 5
Work Boots	Page 6

APPAREL

Men's Wear	Page 7 — 14
Women's Wear	Page 15 — 18
Rainwear	Page 19
Men's Workwear	Page 20 — 21
Kitchen Uniform	Page 22 — 23

ACCESSORIES

Workwear	Page 23
Headwear, Gloves & Scarves	Page 24
Watches & Glasses	Page 25
Footwear	Page 26
Religious	Page 26

CLOTHING SIZE CHART	Page 27
----------------------------------	----------------

FOOTWEAR SIZE CHART	Page 27
----------------------------------	----------------

IMAGES ARE PROVIDED AS A REFERENCE POINT ONLY

FOOTWEAR

ADULTS' RUNNERS



Men's Runner — Victor

TRAFFIC JAM

- ♦ Velcro
- ♦ Bottle green
- ♦ Size 3 — 13

VICTOR



Men's Runner — Thomas

TRAFFIC JAM

- ♦ Velcro
- ♦ Black
- ♦ Size 14 — 16

THOMAS



Men's Runner — Nathan

TRAFFIC JAM

- ♦ Velcro
- ♦ Bottle green
- ♦ Size 14 — 16

NATHAN



Men's Runner — Paul

TRAFFIC JAM

- ♦ Velcro
- ♦ White/Navy
- ♦ Size 5 — 16

PAUL



Men's Runner — Lewis

TRAFFIC JAM

- ♦ Velcro
- ♦ Black
- ♦ Size 3 — 13

LEWIS



Women's Runner — Jodi

TRAFFIC JAM

- ♦ Velcro
- ♦ White/Mauve
- ♦ Size US 4 — 11

JODI



FOOTWEAR

ADULTS' RUNNERS, THONGS & GUM BOOTS

Adults' Runner — Defy

SFIDA

- ◆ Velcro
- ◆ Black OR White/Navy
- ◆ Size US 5 — 13 (Men's Sizing)

ARNRVS



Adults' Runner

SFIDA

- ◆ Lace up
- ◆ Black OR White/Navy
- ◆ Size US 5 — 13 (Men's Sizing)

ARNRL/US



Men's Runner — Hank

TRAFFIC JAM

- ◆ Velcro
- ◆ White
- ◆ Size 6 — 15

HANK



Adults' Thongs

TRAFFIC JAM

- ◆ Single plug
- ◆ Beige
- ◆ Size 3 — 5

ATHONGSP

- ◆ Double plug
- ◆ White
- ◆ Size 6 — 14

ATHONGDP



Non Steel Cap Gum Boot

BATA

- ◆ Mid length
- ◆ Black OR White
- ◆ Size 5 — 13 (Black)
- ◆ Size 2 — 13 (White)

GMBT



FOOTWEAR

WORK BOOTS

Steel Cap Work Boot — Luke

TRAFFIC JAM

- ◆ Elastic sided
- ◆ Leather
- ◆ Black
- ◆ Size 3 — 14

LUKE



Steel Cap Work Boot — Saturn

BATA

- ◆ Lace up
- ◆ Leather
- ◆ Black
- ◆ Size 6 —13

SATURN



Non Steel Cap Work Boot — Jake

TRAFFIC JAM

- ◆ Elastic side
- ◆ Leather
- ◆ Brown
- ◆ Size 3 —14

JAKE



Steel Cap Work Boot — Tradie

MACK

- ◆ Elastic side
- ◆ Leather
- ◆ Black
- ◆ Size 15 —16

TRADIE



APPAREL

MEN'S TOPS

Men's Short Sleeve T-Shirt

JB'S WEAR

- ◆ 100% cotton
- ◆ 190 gsm
- ◆ White OR Black OR Navy OR Bottle green OR Assorted colours
- ◆ Size Small — 5XL, 7XL
(Bottle green: S — 14XL)
(White: S—7XL)

MTSJB



Men's Polo Shirt

JB'S WEAR

- ◆ 210 gsm
- ◆ Short sleeve
- ◆ Double knit
- ◆ Assorted colours
- ◆ Size Small — 5XL

MPSJB



Men's Short Sleeve T-Shirt

TRAFFIC JAM

- ◆ 100% cotton
- ◆ 185 gsm
- ◆ Assorted colours
- ◆ Size 6XL — 12XL

MTSTJ



Men's Flannelette Shirt

TRAFFIC JAM

- ◆ Long sleeve
- ◆ 100% cotton
- ◆ Assorted colours
- ◆ Size Small — 2XL, 4XL

MFSTJ



Men's Long Sleeve T- Shirt

GILDAN

- ◆ 100% cotton
- ◆ 200 gsm
- ◆ Assorted colours OR White OR Black
- ◆ Size Small — 3XL (5XL for White & Black)

MTSLS



APPAREL

MEN'S TOPS & BOTTOMS

Men's Track Top

JB'S WEAR

- ◆ Crew neck fleece
- ◆ 280 gsm
- ◆ 65% polyester — 35% cotton
- ◆ Bottle green OR Navy OR Black OR Grey
- ◆ Size Small — 5XL

MTTJB



Men's Track Top

TRAFFIC JAM

- ◆ Crew neck fleece
- ◆ 280 – 300 gsm
- ◆ 65% polyester — 35% cotton
- ◆ Bottle green OR Grey OR Black
- ◆ Size 6XL — 12XL

MTT

Men's Track Pant

JB'S WEAR

- ◆ 280 gsm
- ◆ 65% polyester — 35% cotton
- ◆ **No internal draw string**
- ◆ Bottle green OR Navy OR Black OR Grey
- ◆ Size Small — 5XL

MTPJB



Men's Track Pant

TRAFFIC JAM

- ◆ 65% polyester — 35% cotton
- ◆ 280 — 300 gsm
- ◆ **No internal draw string**
- ◆ Bottle green OR Grey OR Black
- ◆ Size 6XL — 14XL

MTPTJ

APPAREL

MEN'S BOTTOMS

Men's Podium Short

JB'S WEAR

- ◆ 100% polyester
- ◆ Navy OR Black
- ◆ Size Small— 4XL

MSHT



Men's Mid Length Shorts

TRAFFIC JAM

- ◆ 100% Cotton Woven
- ◆ **No internal draw string**
- ◆ Black OR Grey
- ◆ Size X-Small — 5XL

MSHTML



Men's Mid Length Rugby Short

TRAFFIC JAM

- ◆ Polyester and cotton blend
- ◆ **No internal draw string**
- ◆ Bottle green OR Black
- ◆ Size Small — 5XL (12XL for Bottle Green)

MSHTMLRUGBY



Men's Longer Leg Shorts

JB'S WEAR

- ◆ 100% polyester
- ◆ Assorted colours
- ◆ Size S — 4XL

MSHTLL



APPAREL

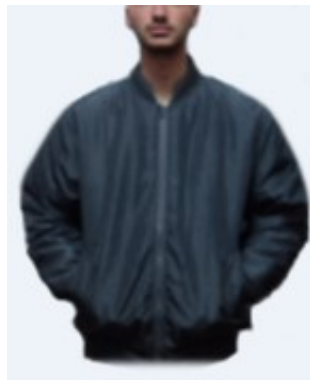
MEN'S OUTERWEAR

Men's Flying Jacket

TRAFFIC JAM

- ◆ Shell, lining and padding = polyester
- ◆ Bottle green OR Grey
- ◆ Size Small — 5XL

MFLJKTJ



Men's Quarter Zip Jacket

TRAFFIC JAM

- ◆ Polar fleece
- ◆ Grey
- ◆ Size Small — 5XL

MQZPFJKTJ



Grey Marle

Men's Full Zip Jacket

JB'S WEAR

- ◆ Polar fleece
- ◆ Bottle green OR Black OR Navy
- ◆ Size Small — 5XL

MFZJK



Men's Quarter Zip Jacket

JB'S WEAR

- ◆ Polar fleece
- ◆ Bottle green OR Black OR Navy
- ◆ Size Small — 5XL

MQZPFJK



Men's Vest

JB'S WEAR

- ◆ Polar fleece
- ◆ Assorted colours
- ◆ Size Small — 5XL

MVEST



APPAREL

MEN'S SLEEPWEAR

Men's Winter Pyjama

- ◆ 100% cotton
- ◆ Flannelette
- ◆ Assorted colours
- ◆ Small — 5XL

MPJWT



Men's Summer Pyjama — SS

TRAFFIC JAM

- ◆ Woven cotton blend
- ◆ Short sleeve — Short leg
- ◆ Assorted colours
- ◆ Size X-Small — XL

MPJSMSS



Men's Summer Pyjamas— SS

CONTARE

- ◆ Woven cotton blend
- ◆ Short sleeve — Short leg
- ◆ Assorted colours
- ◆ Size 2XL

MPJSMSSC



Men's Summer Pyjama — LL

TRAFFIC JAM

- ◆ Woven cotton blend
- ◆ Long sleeve — Long leg
- ◆ Assorted colours
- ◆ Size X-Small — 2XL

MPJSMMLL



APPAREL

MEN'S UNDERWEAR

Men's Singlet

JB'S WEAR

- ◆ Jersey knit
- ◆ 190 gsm
- ◆ Black OR Navy OR White
- ◆ Size Small — 5XL

MSG



Men's 'Big Folks' Singlet

TRAFFIC JAM

- ◆ 100% Cotton
- ◆ 185 gsm
- ◆ Assorted colours
- ◆ Size 6X-Large — 12XL

MSGTJ



Men's Singlet

RAMO

- ◆ Rib
- ◆ 240 gsm
- ◆ Assorted colours
- ◆ Size Small — 4XL

MSGR



Men's Boxer

TRAFFIC JAM

- ◆ Cotton blend
- ◆ Assorted colours
- ◆ Size X-Small — 3XL

MBXRTJ



Men's Singlet

GILDAN

- ◆ 100% Cotton
- ◆ 180 gsm
- ◆ Grey OR Royal Blue
- ◆ Size Small — 2XL

MSGG



Men's Brief

TRAFFIC JAM

- ◆ 100% cotton
- ◆ Assorted colours
- ◆ Size Small — 7XL

MBRFTJ



APPAREL

MEN'S UNDERWEAR

Men's Ankle Sport Socks

TRAFFIC JAM

- ◆ Cotton blend
- ◆ 5 pack
- ◆ White
- ◆ Size 6 — 10 & 11 — 14

MSSAKTTJ



Men's Work Socks

TRAFFIC JAM

- ◆ Long lasting bulky acrylic knit
- ◆ 5 pack
- ◆ Black
- ◆ Size 6 — 10 & 11 — 14

MSWKTJ



Men's Crew Sport Socks

RIO

- ◆ Cotton blend
- ◆ White
- ◆ Size 6 — 10 & 11 — 14

MSSCRW



Men's Business Socks

RIO

- ◆ Cotton blend
- ◆ Black
- ◆ Size 6 — 10 & 11 — 14

MSBUS



APPAREL

MEN'S THERMAL UNDERWEAR

Men's Thermal Short Sleeve T-Shirt

- ◆ Brushed fleece
- ◆ Polycotton
- ◆ White OR Black
- ◆ Size Small — 2XL

MTSSSTHFS



Men's Thermal Long Sleeve T-Shirt

- ◆ Brushed fleece
- ◆ Polycotton
- ◆ White OR Black
- ◆ Size Small — 2XL

MTSLSTHFS



Men's Long John

SPARROW

- ◆ Brushed fleece
- ◆ Polycotton
- ◆ White OR Black
- ◆ Size Small — 2XL

MLJTHFS



APPAREL

WOMEN'S TOPS

Women's Short Sleeve T-Shirt

JB'S WEAR

- ◆ 100% cotton
- ◆ 190 gsm
- ◆ White OR Assorted colours
- ◆ Size 8 — 20

FTS



Women's Track Top

TRAFFIC JAM

- ◆ Crew neck fleece
- ◆ 280 – 300 gsm
- ◆ 65% polyester — 35% cotton
- ◆ Bottle green OR Grey OR Black
- ◆ Size 10 — 38

FTT



Women's Long Sleeve T-Shirt

RAMO

- ◆ 100% cotton
- ◆ White OR Black OR Assorted colours
- ◆ Size 8 — 18

FTSLS



APPAREL

WOMEN'S BOTTOMS, OUTERWEAR & SLEEPWEAR

Women's Track Pant

TRAFFIC JAM

- ◆ 65% Polyester 35% Cotton
- ◆ 280 gsm
- ◆ No internal draw string
- ◆ Bottle green OR Grey OR Black
- ◆ Size 10 — 38

FTP



Women's Full Zip Jacket

JB'S WEAR

- * Polar fleece
- * Assorted colours
- * Size 10 — 22

FFZJK



Women's Summer Pyjamas — LL

TRAFFIC JAM

- ◆ Long sleeve
- ◆ Long leg
- ◆ Assorted colours
- ◆ Size 12 — 20

FPJSMLL



Women's Longer Leg Shorts

TRAFFIC JAM

- ◆ Assorted colours
- ◆ Size 10 — 18

FSHTLL

Women's Pyjama Pant

TRAFFIC JAM

- ◆ Assorted colours
- ◆ Size Small — 2X-Large

FPJPT

APPAREL

WOMEN'S UNDERWEAR

Women's Traffic Jam Bikini Brief

TRAFFIC JAM

- ◆ Cotton
- ◆ Beige OR Black
- ◆ Size 8 — 18

FBRFTJ



Women's Anklet Sport Socks

ASSORTED BRANDS

- ◆ Cotton blend
- ◆ White
- ◆ Size 3 — 8 & 8 — 11

FSSAKT



Women's Full Brief

ASSORTED BRANDS

- ◆ Cotton
- ◆ Assorted colours OR Black
- ◆ Size 10 — 26

FBRFF



Women's Crew Sport Socks

TRAFFIC JAM

- ◆ Cotton blend
- ◆ White
- ◆ Size 2 — 8 & 9 — 11

FSSCRWTJ



Women's Singlet

RAMO

- ◆ Cotton
- ◆ Assorted colours OR White
- ◆ Size 8 — 22

FSG



APPAREL

WOMEN'S UNDERWEAR & THERMAL UNDERWEAR

Dream Bra

AMBRA

- ◆ Seamless bra
- ◆ Black
- ◆ Size 8—10, 10—12, 14—16 & 16—18

FBRADRM



Women's Thermal Short Sleeve T-Shirt

- ◆ Thermal fleece
- ◆ White OR Black
- ◆ Size 10 — 22

FTSSSTHFS



Women's Thermal Long Sleeve T-Shirt

- ◆ Thermal fleece
- ◆ White OR Black
- ◆ Size 10 — 22

FTSLSTHFS



Crop Top

TRAFFIC JAM

- ◆ Beige
- ◆ Size 8—10, 10—12, 12—14, 14—16, 16—18, 18—20 & 22—24

FBRACROP



Women's Long John

- ◆ Thermal fleece
- ◆ White OR Black
- ◆ Size 10 — 22

FLJTHFS



APPAREL

RAINWEAR

Adults' Rain Jacket

BOCINI

- ◆ Fully lined
- ◆ Black OR Navy
- ◆ Size Small — 3X-Large

ARNJK



Adults' 3/4 Rain Coat

DNC

- ◆ PVC polyester
- ◆ Unlined
- ◆ Yellow
- ◆ Size Small — 6X-Large

ARNCT3/4



Adults' Poncho

- ◆ Disposable

APNCO



Adults' Mid-Calf Rain Coat

TEAM

- ◆ PVC heavy duty
- ◆ Clear
- ◆ Size Small — 3X-Large

ARNCTMC



APPAREL

MEN'S WORKWEAR

Men's Coverall

DNC

- ◆ 100% cotton drill
- ◆ 310 gsm
- ◆ Bottle green OR Navy
- ◆ Size 77R — 112R, 92S — 132S

MCVL



Men's Action Back Overall

DNC

- ◆ 100% cotton drill
- ◆ 310 gsm
- ◆ Navy
- ◆ Size 77R — 132S (Refer to Master Price List for size breakdown)

MOVLAB



Men's Coverall

KING GEE

- ◆ 100% cotton drill
- ◆ 310 gsm
- ◆ Navy
- ◆ Size 137S — 152S

MCVL



Men's Work Pant

DNC

- ◆ 100% cotton drill
- ◆ 290 gsm
- ◆ Bottle green OR Navy
- ◆ Size 77R — 132R, 92S — 132S

MWKPNTS



APPAREL

MEN'S WORKWEAR

Men's Work Short

DNC

- ◆ 100% cotton drill
- ◆ 258 gsm
- ◆ Bottle green OR Navy
- ◆ Size 77R — 132R, 92S — 132S

MSHTWK



Men's Work Pant

TRAFFIC JAM

- ◆ Heavy weight cotton drill
- ◆ 285 gsm
- ◆ 50+ UPF Excellent Sun Protection
- ◆ Bottle green
- ◆ Size 82R — 117R

MWKPNTTJ



Men's Long Sleeve Work Shirt

DNC

- ◆ 100% cotton drill
- ◆ 190 gsm
- ◆ Navy
- ◆ Size Small — 5X-Large

MWKSRTL



Men's Long Sleeve Work Shirt

TRAFFIC JAM

- ◆ Cotton drill
- ◆ 190 gsm
- ◆ 50+ UPF Excellent Sun Protection
- ◆ Bottle green
- ◆ Size Small — 5X-Large

MWKSRTLSTJ



Larger sizes of our workwear can be supplied upon request, however minimum quantities will need to be met.

APPAREL

KITCHEN UNIFORM

Full Length Apron with Pocket

JB'S WEAR

- ◆ With bib
- ◆ 65% polyester 35% cotton
- ◆ 195 gsm
- ◆ Black OR Black/White OR Navy/White
- ◆ Size 65 x 71 cm OR 86 x 93 cm (Black)
- ◆ Size OSFA (Black/White OR Navy/White)

APNFLBP



Full Length Apron

JB'S WEAR

- ◆ With bib
- ◆ Cotton drill
- ◆ 300gsm
- ◆ Black/White OR Navy/White
- ◆ Size OSFA

APNFLB



Vinyl Apron

JB'S WEAR

- ◆ Heavy duty
- ◆ Black OR Royal Blue
- ◆ Size OSFA

APNHD



Chef's Jacket

JB'S WEAR

- ◆ 35% cotton 65% polyester
- ◆ 245 gsm
- ◆ Black OR White OR Black/White
- ◆ Size 2X-Small — 4X-Large

CHEFJKT



Chef's Fleecy Top

JB'S WEAR

- ◆ 80% cotton & 20% polyester
- ◆ White
- ◆ Size Small — 5X-Large

CHEFTOP



Chef's Pant

JB'S WEAR

- ◆ Polyester & cotton
- ◆ Black OR Checked
- ◆ Size 2X-Small — 4X-large

CHEFPNT



APPAREL & ACCESSORIES

KITCHEN UNIFORM & WORKWEAR

Chef's Cap

JB'S WEAR

- ◆ Polyester & cotton
- ◆ Black OR White
- ◆ Size OSFA

CHEFCAP



Work Grip Gloves

HARD YAKKA

- ◆ Superior gripping power
- ◆ Excellent abrasion resistance
- ◆ Work type: assembly, brickwork, glass, sheet, metal
- ◆ Black
- ◆ Size Small — 2X-Large

GRIPGLVE



Protective Glasses

JB'S WEAR

- ◆ 12 per pack
- ◆ Clear OR Tinted
- ◆ Size OSFA

PRTECTGLASS



Hard Hat

DNC

- ◆ Yellow
- ◆ Size OSFA

HARDHAT



Seal Safety Glasses

DNC

- ◆ Clear OR Smoke
- ◆ Size OSFA

SAFETYGLASS



Respiratory Mask

JB'S WEAR

- ◆ 5 per pack
- ◆ White
- ◆ Size OSFA

RESPMASK



Work Gloves

HARD YAKKA

- ◆ Neoprene padded reinforcement
- ◆ Perforated fourchettes
- ◆ Elastic cuff
- ◆ Black
- ◆ Size Small — 2X-Large

WRKGLVE



ACCESSORIES

HEADWEAR, GLOVES & SCARVES

Adults' Wide Brim Hat

HEADWEAR STOCKISTS

- ◆ Black OR Bottle green OR Navy
- ◆ Size Small — X-Large

AHATWB



Adults' Bucket Hat

HEADWEAR STOCKISTS

- ◆ Bottle green
- ◆ Size Medium/Large & Large/X-Large

AHATBKT



Adults' Baseball Cap

HEADWEAR STOCKISTS

- ◆ Bottle green OR Black OR Navy
- ◆ Size OSFA

ACAP



Adults' Beanie

HEADWEAR STOCKISTS

- ◆ Bulky acrylic knit
- ◆ Bottle green OR Black OR Navy OR Assorted colours
- ◆ Size OSFA

ABNE



Men's Acrylic Gloves

ENGELITE

- ◆ Black
- ◆ Size OSFA

MGLOVE



Men's Wool Gloves

ENGELITE

- ◆ Black
- ◆ Size OSFA

MGLOVEW



Men's Fingerless Gloves

ENGELITE

- ◆ Acrylic knit
- ◆ Black
- ◆ Size OSFA

MGLOVEF



Adults' Scarf

ENGELITE

- ◆ Acrylic cashmere feel
- ◆ Black
- ◆ Size OSFA

ASCRF



ACCESSORIES

WATCHES & GLASSES

Men's Digital Watch

- ◆ Assorted styles available
- ◆ Assorted colours available

MWATCHD



Men's Sunglasses

- ◆ Assorted styles available
- ◆ Polarised lenses available

MSUNGLASS



Women's Digital Watch

- ◆ Assorted styles available
- ◆ Assorted colours available

FWATCHD



Women's Sunglasses

- ◆ Assorted styles available
- ◆ Polarised lenses available

FSUNGLASS



Men's Analogue Watch

- ◆ Assorted styles available
- ◆ Assorted colours available

MWATCHA



Adults' Reading Glasses

- ◆ Assorted styles available
- ◆ Assorted colours available

READGLASS



Women's Analogue Watch

- ◆ Assorted styles available
- ◆ Assorted colours available

FWATCHA



ACCESSORIES

FOOTWEAR & RELIGIOUS

Shoe Laces

- ◆ Black OR White
- ◆ Size 120cm

LACESHE

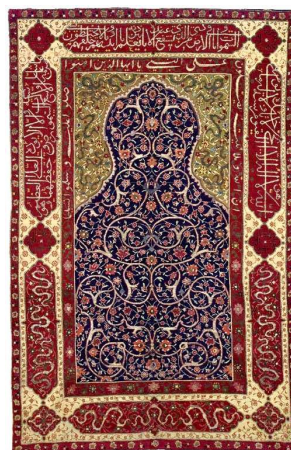


Prayer Mat

TRAFFIC JAM

- ◆ Assorted styles available
- ◆ Assorted colours available

MATP



Insole

- ◆ Size 6 — 15

INSLE



SIZING

APPAREL & FOOTWEAR

Men's Wear

Size	S	M	L	XL	2XL	3XL	4XL	5XL
	75+	85+	95+	105+	115+	125+	135+	145+
Waist (CM)	82	87	92	97	102	107	112	117
Chest (CM)	85 — 90	95 — 10	105 — 110	115 — 120	125 — 130	135 — 140	145 — 150	155 — 160

Women's Wear

Size	S	M	L	XL	2XL	3XL	4XL	5XL
	10	12	14	16	18	20	22	24
Bust (CM)	76	80	84	88	92	96	100	104
Waist (CM)	58	62	66	70	74	77	82	86
Hip (CM)	78	86	90	94	98	102	106	110

Men's Footwear

UK	5	6	7	8	9	10	11	12
US	5.5	6.5	7.5	8.5	9.5	10.5	11.5	12.5
European	38	39	40	42	43	45	46	47

Women's Footwear

UK	3.5	4.5	5.5	6.5	7.5	8.5	9.5	10.5
US	5	6	7	8	9	10	11	12
European	36	37	39	40	41	43	44	45



We are your one stop shop!

Harry's Shoes Plus is now online!

Our website allows you too:

- **view catalogues and products**
- **access information about our fantastic range**
- **place orders**
- **make payments**

WWW.HARRYSSHOESPLUS.COM.AU

Contact us to receive your log in details or if you have any enquiries about additional products.